



Welcome



Visit us:-
www.aska.world
askaworldinfo@gmail.com



ABOUT US



Marketing Concept by Congratulations for having taken a right decision in your life .You are joining the Company which is going to create history in the network marketing business.

Aska is a best experienced people's community where they can build social platform and gives best opportunity to you & your career. You can have everything you want in life, if you will just help enough other people get what they want .”We live by this simple yet powerful philosophy and we invite you to embrace it in order to achieve all of your dreams.

www.aska.world

VISION & MISSION



Vision

Our vision is to use every minute of every person to make a system stronger. We want to develop a program highly recommended by our investors and partners. We offer our customers the lowest possible investment and high profit. Our main aim is to take forward the backward people of our country

www.aska.world

Mission

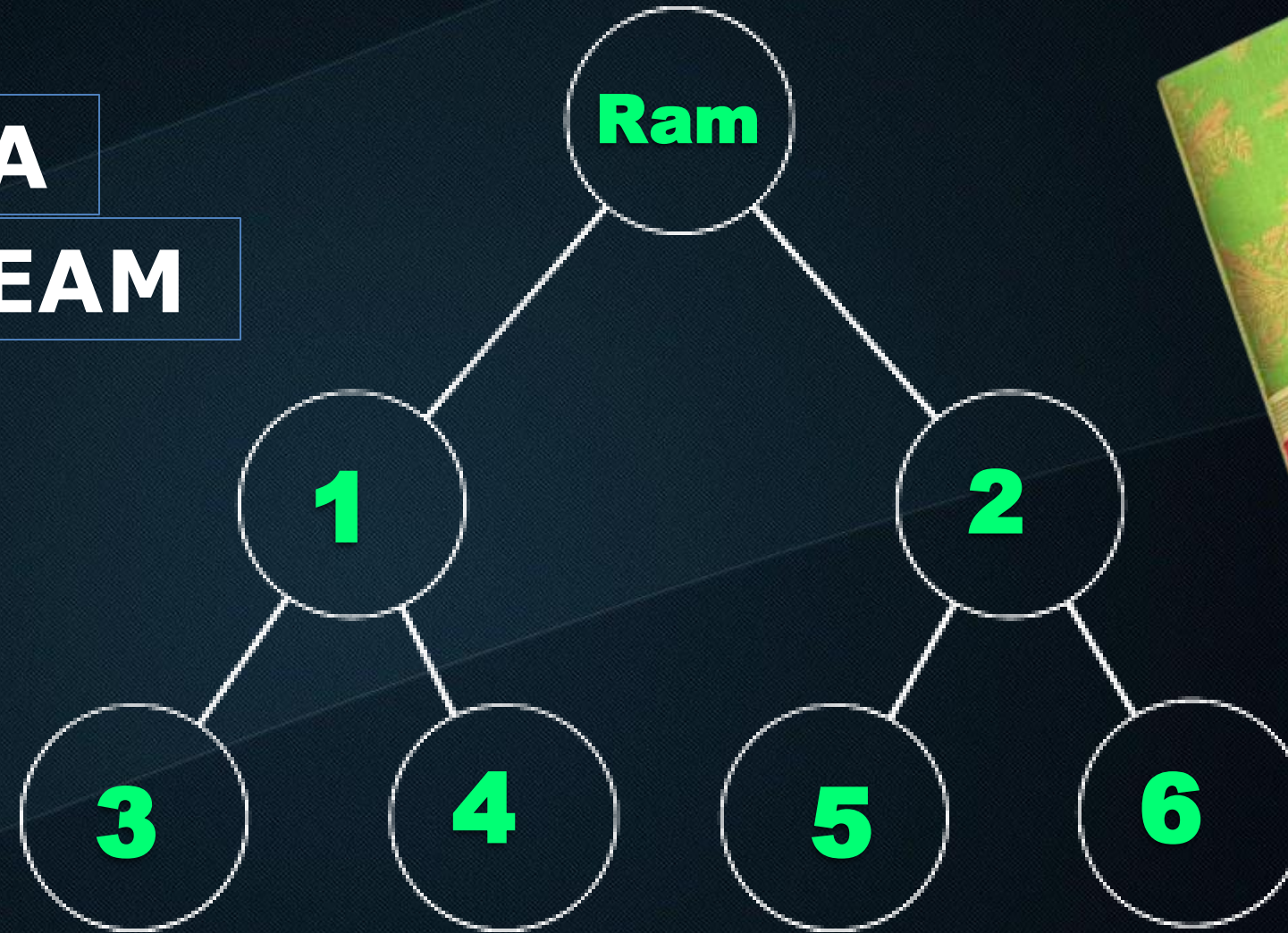
Our aim is to provide competitive and premium quality services to clients. We are working hard to increase our visibility and speed. The company continues their legacy of making it to the top and fortunately, it is doing well every day. The world's largest liquid market is waiting for more profit to be made through Trade. Giving financial freedom to every person is our main goal



JOINING PACKAGE ₹ 1500



Plan-A
SELF TEAM



MRP-1500

Commission:-
100x2=200
50x4 =200
Total 400 Ram



ASKA MARKETING PVT LTD

SELF

TEAM

LEVEL

INCOME

LEVEL	COMMISSION
1 st	100x2=200/-
2 nd	50x4=200/-
3 rd	20x8=160/-
4 th	20x16=320/-
5 th	20x32=640/-
6 th	20x64=1280/-
7 th	20x128=2560/-
8 th	20x256=5120/-
9 th	20x512=10240/-
10 th	20x1024=20480/-
TOTAL AMOUNT-41200/-	

DIRECT SALARY

30K INVEST 3K

1 LAC INVEST 10K

2 LAC INVEST 25K

5 LAC INVEST 60K

10 LAC INVEST 100K

SALARY PER MONTH LONG TIME.



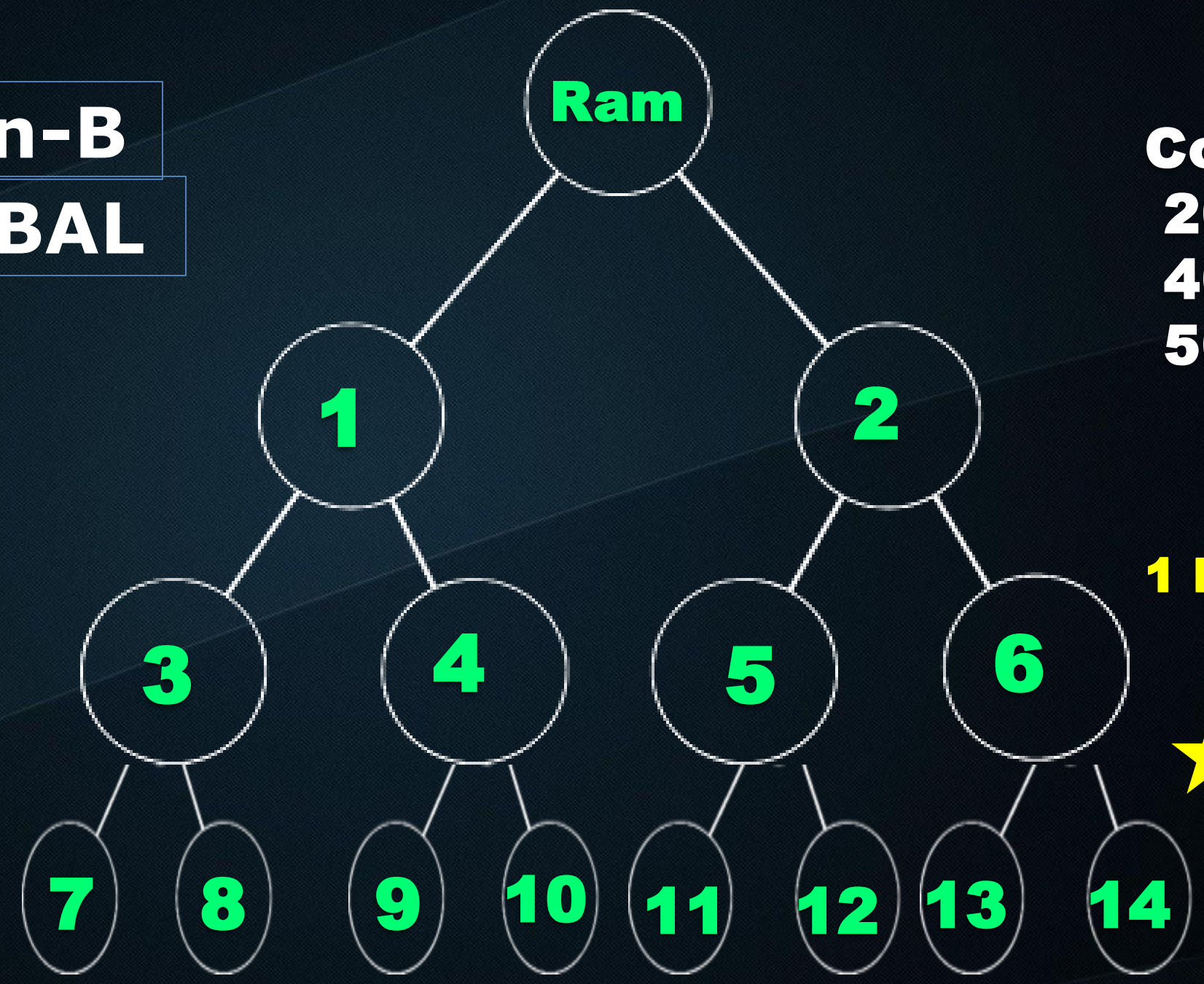
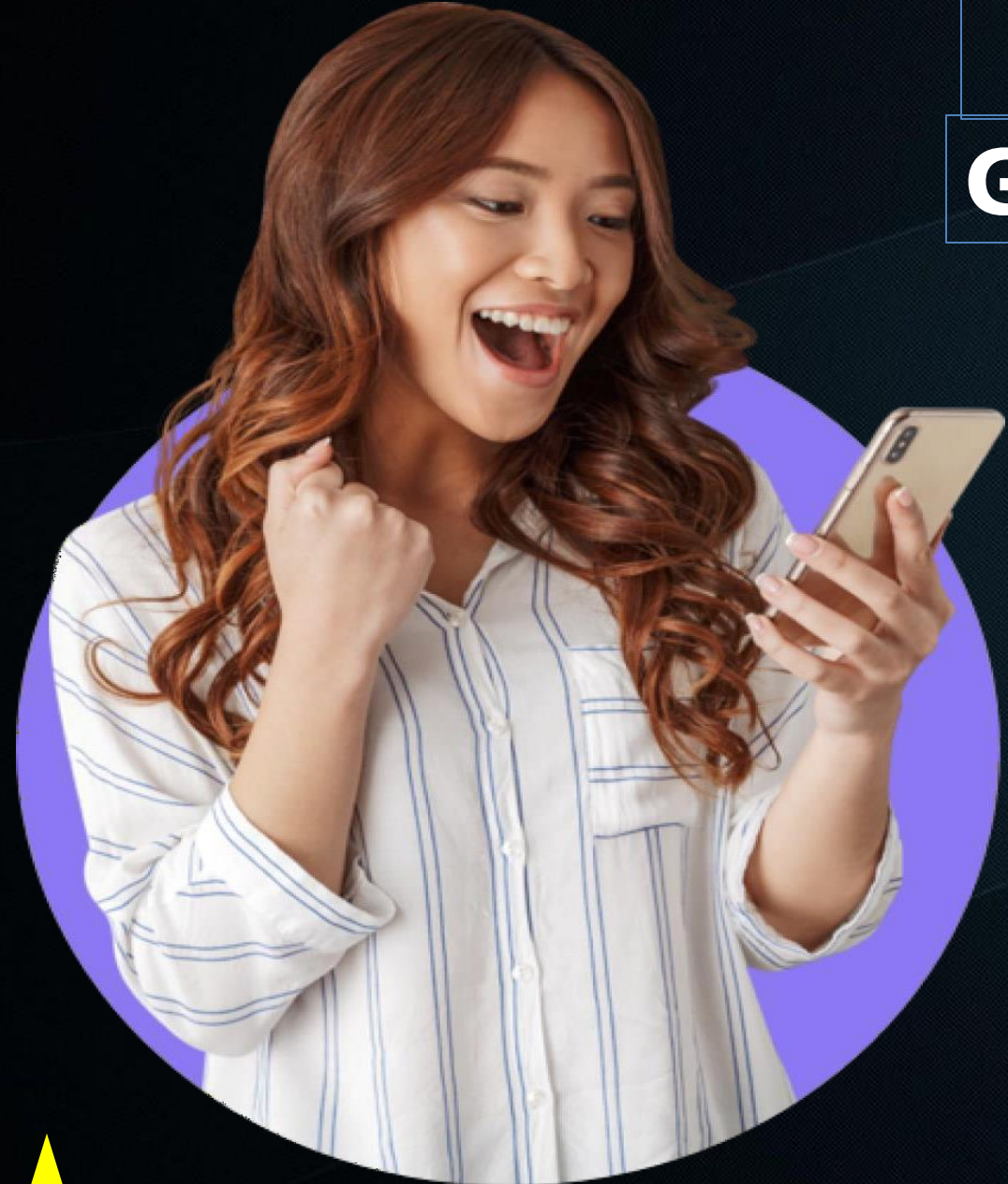
www.aska.world

★ **This Income Is Distributed To 2 Sponsor & you can Also Do it Unlimited Sponsor.**



ASKA MARKETING PVT LTD

**Plan-B
GLOBAL**



Commission:-
 $200 \times 2 = 400$
 $400 \times 4 = 1600$
 $500 \times 8 = 4000$
Total-6000 Ram

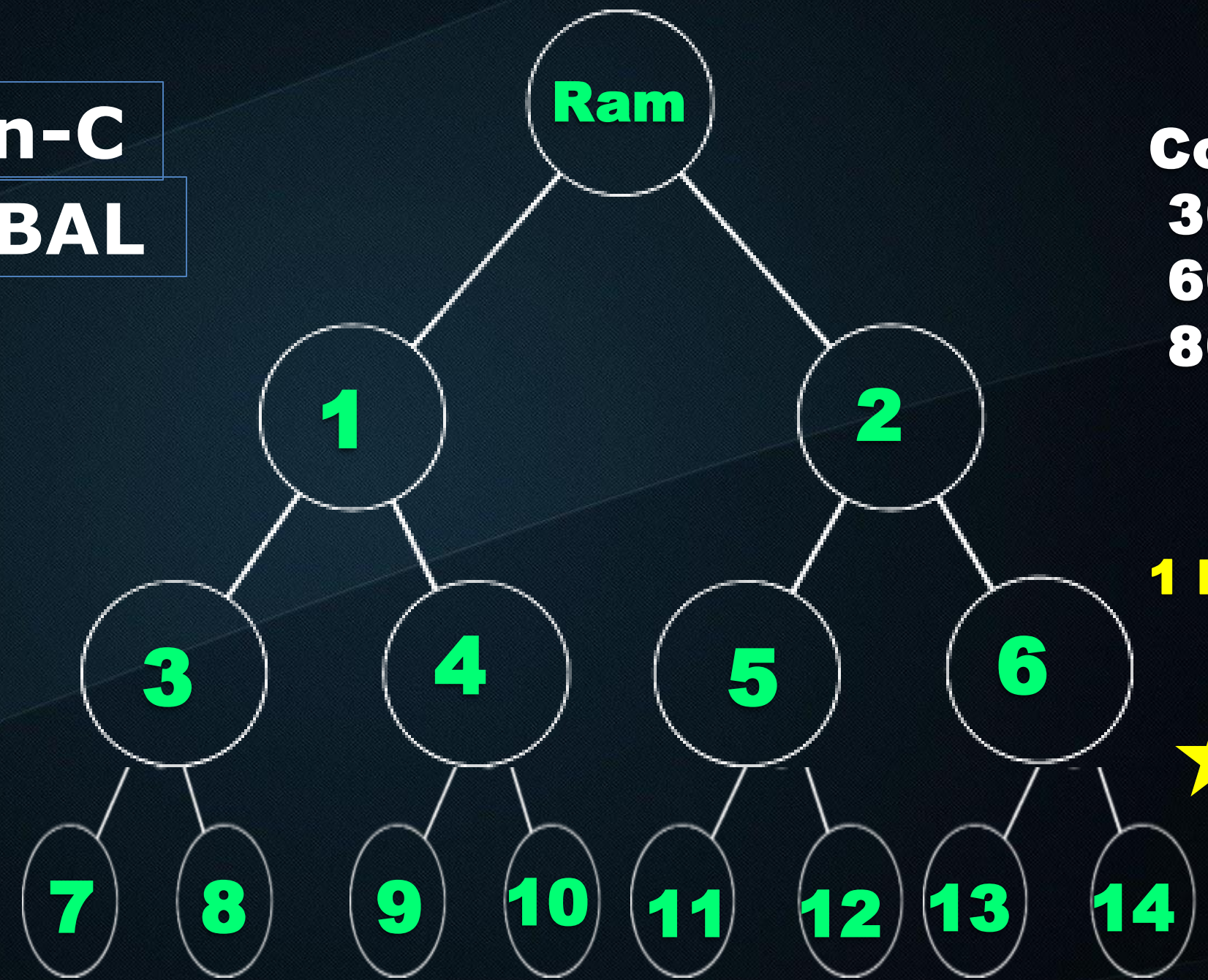
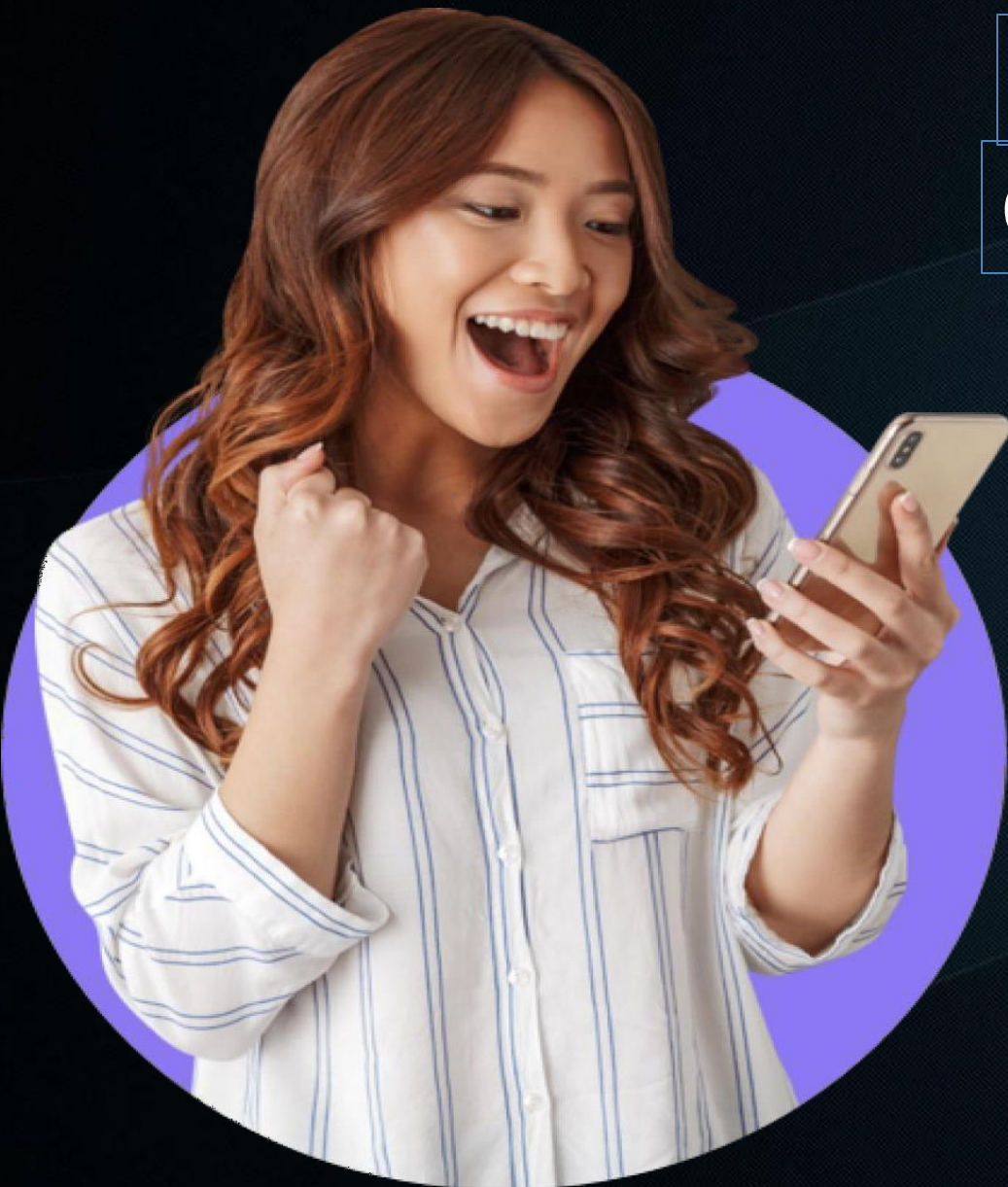
**1 NO ID -200X2=400
400X4=1600
TOTAL-2000**
★ **2 NO ID SAME 2000/-**

★ **14 MEMBER COMPLETED THEN RAM SALARY START 3000/-MONTHLY.AND OLD SALARY CLOSED.
FOR SALARY WITHDRAWAL WE NEED 1 DIRECT.**



ASKA MARKETING PVT LTD

**Plan-C
GLOBAL**



Commission:-
 $300 \times 2 = 600$
 $600 \times 4 = 2400$
 $800 \times 8 = 6400$
Total-9400 Ram

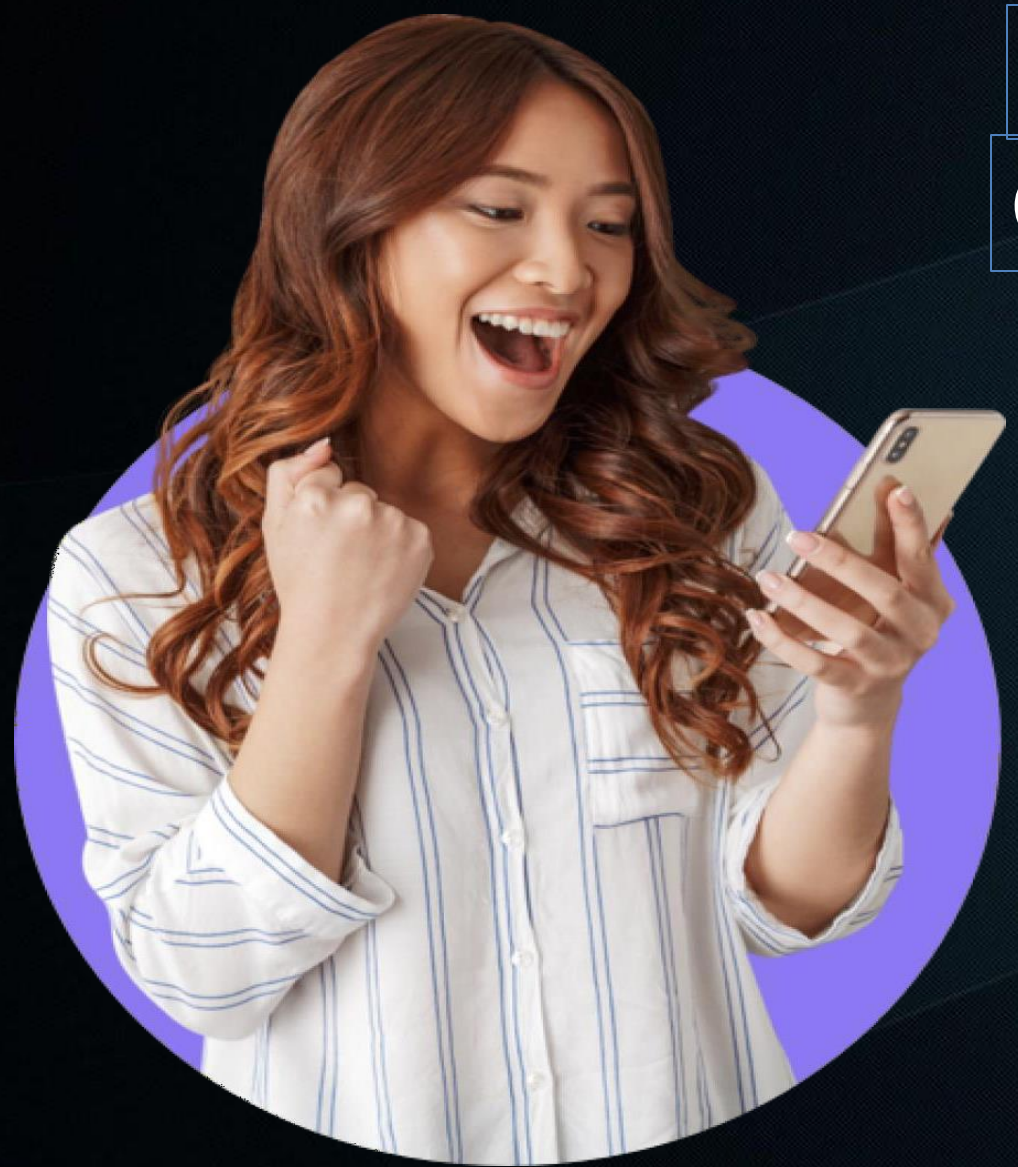
1 NO ID -300X2=600
 $600 \times 4 = 2400$
TOTAL-3000

★ **2 NO ID SAME 3000/-**

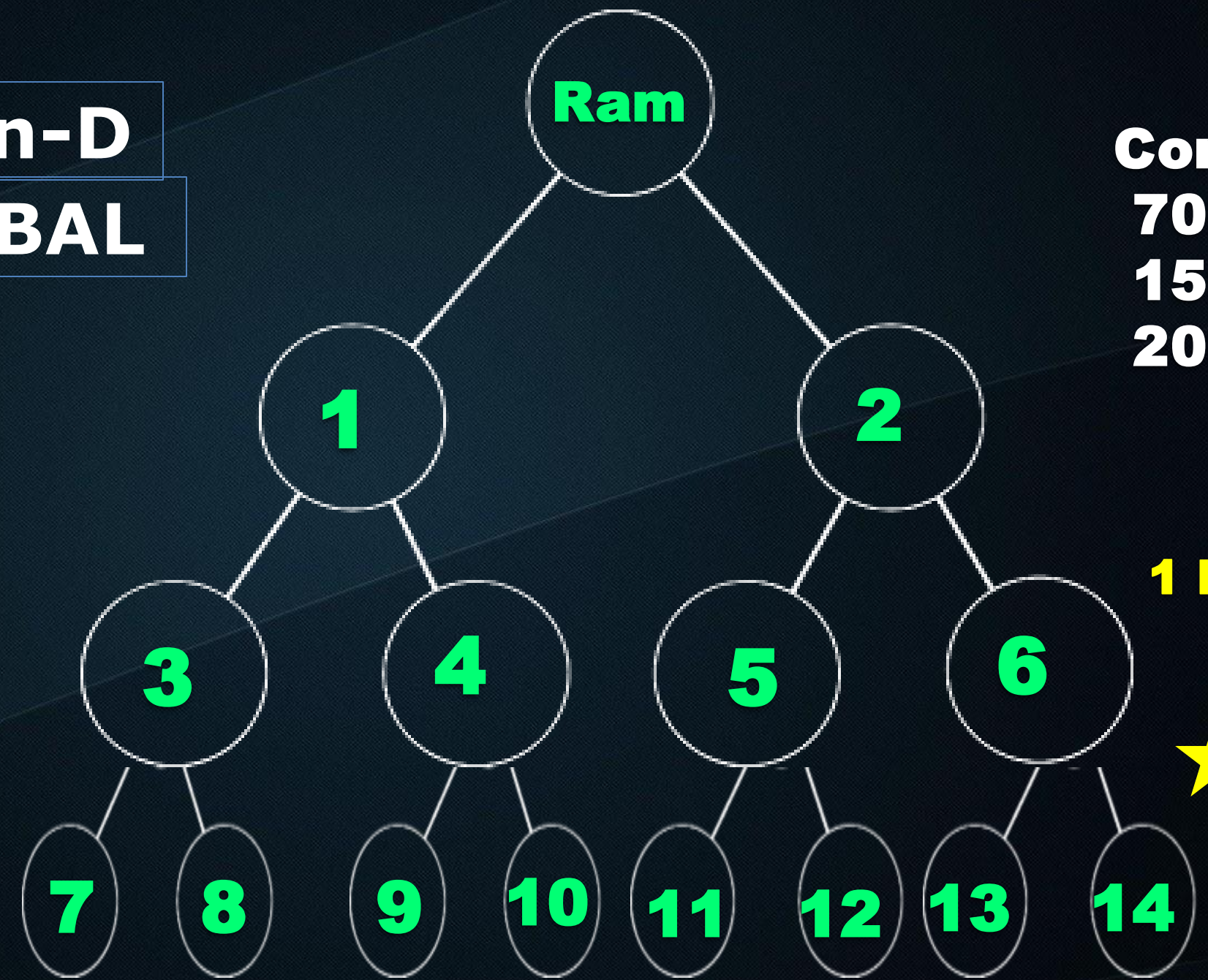
★ **14 MEMBER COMPLETED THEN RAM SALARY START 10000/-MONTHLY AND OLD SALARY CLOSED.**
FOR SALARY WITHDRAWAL WE NEED 4 DIRECT / 1 GROUP.



ASKA MARKETING PVT LTD



**Plan-D
GLOBAL**



Commission:-
700x2=1400
1500x4=6000
2000X8=16000
Total-23400 Ram

1 NO ID -700X2=1400
1500X4=6000
TOTAL-7400
★ 2 NO ID SAME 7400/-

★ 14 MEMBER COMPLETED THEN RAM SALARY START 25000/- MONTHLY AND OLD SALARY CLOSED.

FOR SALARY WITHDRAWAL WE NEED 8 DIRECT / 2 GROUP.

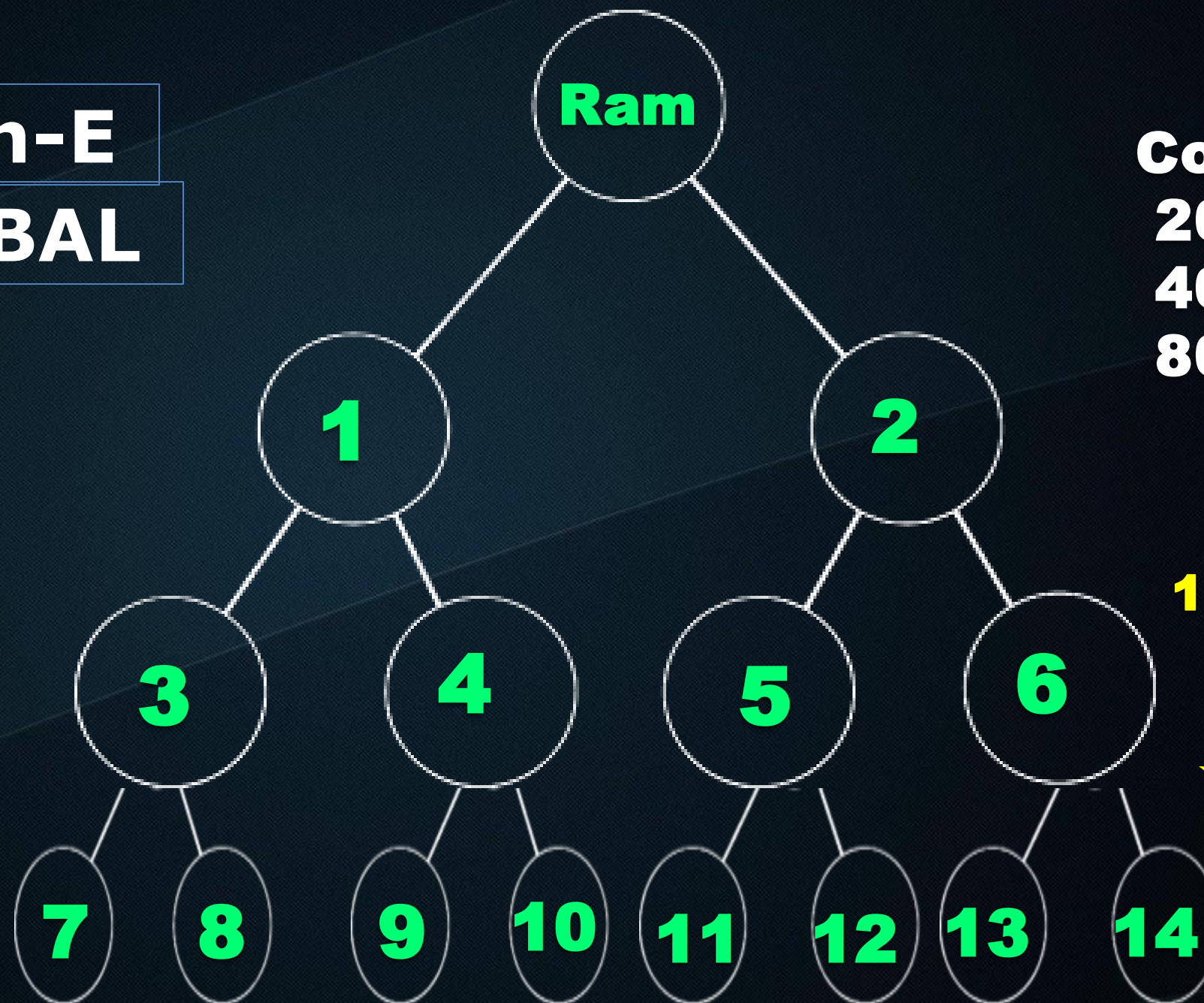


ASKA MARKETING PVT LTD



**Plan-E
GLOBAL**

FULL PAID BIKE



Commission:-
 $2000 \times 2 = 4000$
 $4000 \times 4 = 16000$
 $8000 \times 8 = 64000$
Total-84000 Ram

1 NO ID -2000X2=4000
 $4000 \times 4 = 16000$
TOTAL-20000

★ **2 NO ID SAME 20000/-**



★ **14 MEMBER COMPLETED THEN RAM SALARY START 60000/- MONTHLY AND OLD SALARY CLOSED.
 FOR SALARY WITHDRAWAL WE NEED 20 DIRECT / 5 GROUP.**

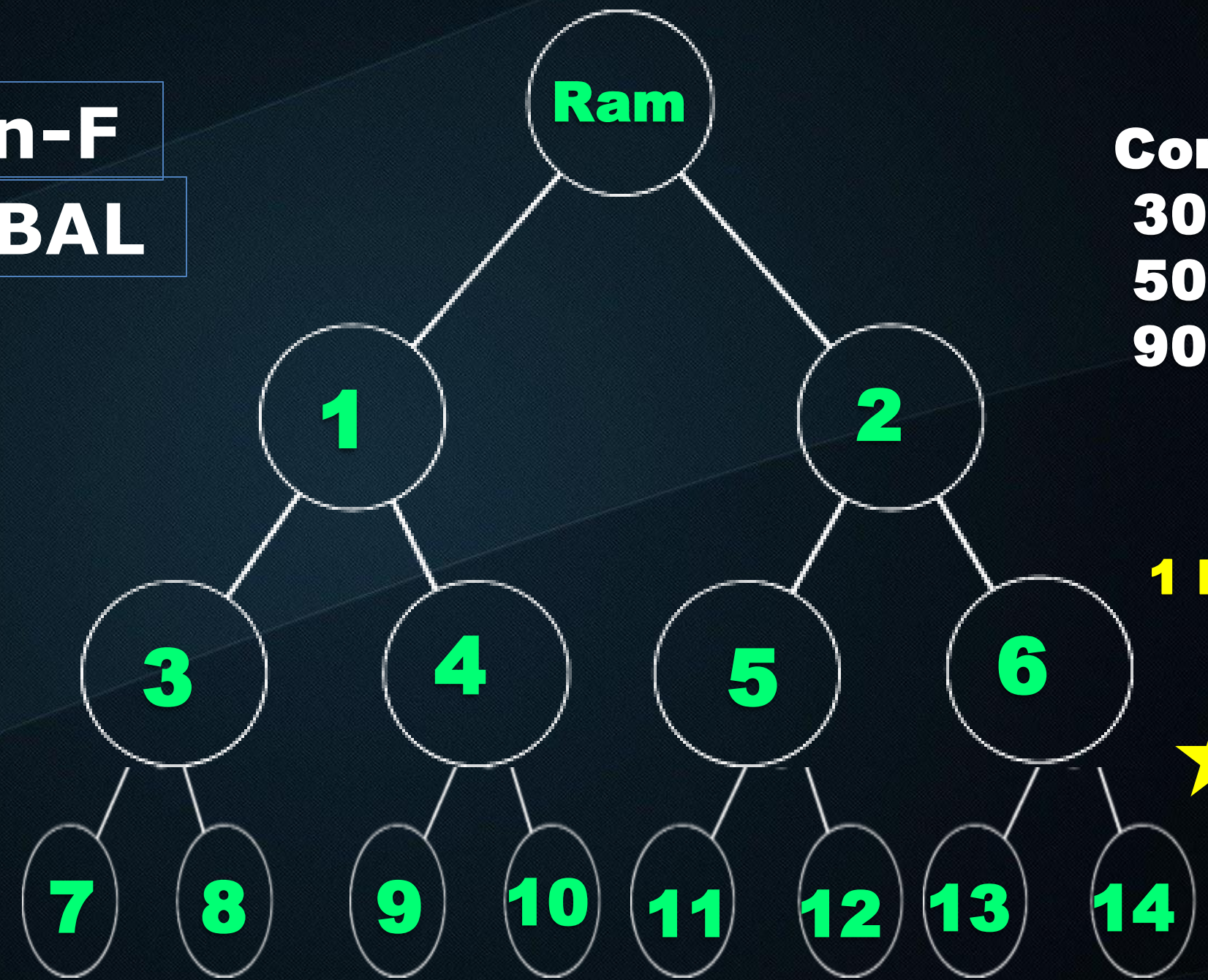


ASKA MARKETING PVT LTD



FULL PAID CAR

Plan-F
GLOBAL



Commission:-
 $3000 \times 2 = 6000$
 $5000 \times 4 = 20000$
 $9000 \times 8 = 72000$
Total-98000 Ram

1 NO ID -3000X2=6000
 $5000 \times 4 = 20000$
TOTAL-26000
 ★ **2 NO ID SAME 26000/-**



★ **14 MEMBER COMPLETED THEN RAM SALARY START 1,00,000/-MONTHLY AND OLD SALARY CLOSED. FOR SALARY WITHDRAWAL WE NEED 40 DIRECT / 10 GROUP.**



ASKA MARKETING PVT LTD

TERMS & CONDITIONS

- ✓ DAILY PAYOUT.
- ✓ WITHDRAWAL COMMISSION EVERY DAY
- ✓ MINIMUM WITHDRAWAL WILL BE 400 AND MULTIPLE OF 100 .
- ✓ WITHDRAWAL TIME WILL BE 10 AM TO 02 PM.
- ✓ SERVICE CHARGE WILL BE 10% DEDUCT.
- ✓ WITHDRAWAL WILL CREDITED 72 HOURS.
- ✓ SATURDAY & SUNDAY WITHDRAWAL OFF.



Visit us:-
www.aska.world



askaworldinfo@gmail.com



Let's Join us

ASKA WORLD

Thank You !

Visit us:-

www.aska.world



askaworldinfo@gmail.com

